

# Data Sheet

## LL01NI-BYKxxL19

PHILIPS  
**LUMILEDS**



### ■ Features & Typical Applications

- High efficiency
- Available with 5 beam angles
- Optimized Uniformity
- Lens without Holder
- Commercial Lighting
- Architectural Lighting

### ■ Table of Contents

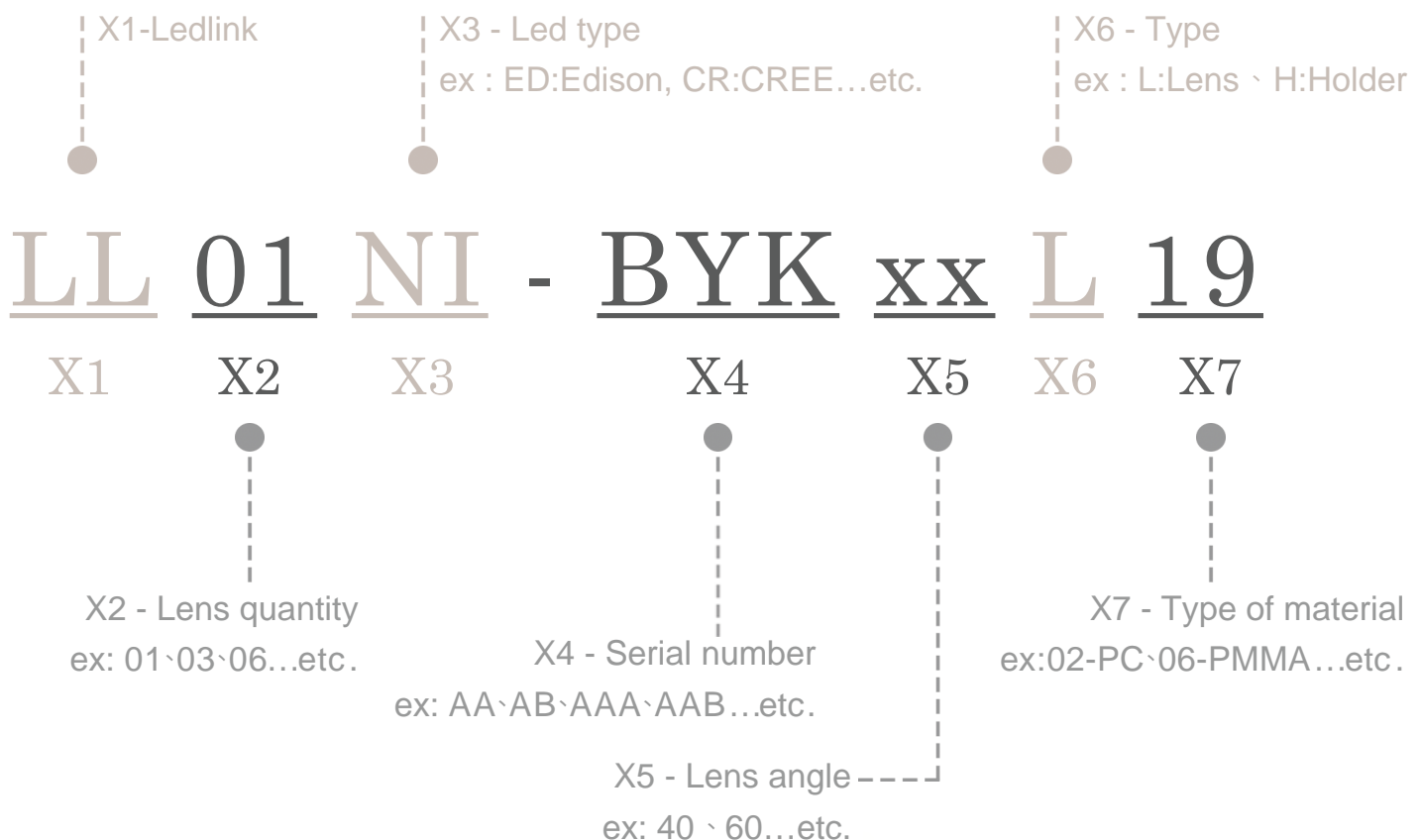
General Information & Product Nomenclature.....	P.2
Optical Specifications .....	P.3
Mechanical Specifications .....	P.5
Package Specifications.....	P.6

# LL01NI-BYKxxL19

## General Information

- Lens Material : PC1250Z
- Operating Temperature range -40°C~+110°C(upper limit +120°C).
- Storage Temperature range -40°C~+110°C(upper limit +120°C).  
 \* Average transmittance in visible spectrum 400nm~700nm>90%.
- Usage and Maintenance:
  1. If necessary, clean lenses with mild soap, water and soft cloth.
  2. Never use any commercial cleaning solvents on lenses, like alcohol.
  3. Please handle or install lenses with wearing gloves, skin oils may damage lens or its optical characteristic.

## Product Nomenclature



# LL01NI-BYKxxL19

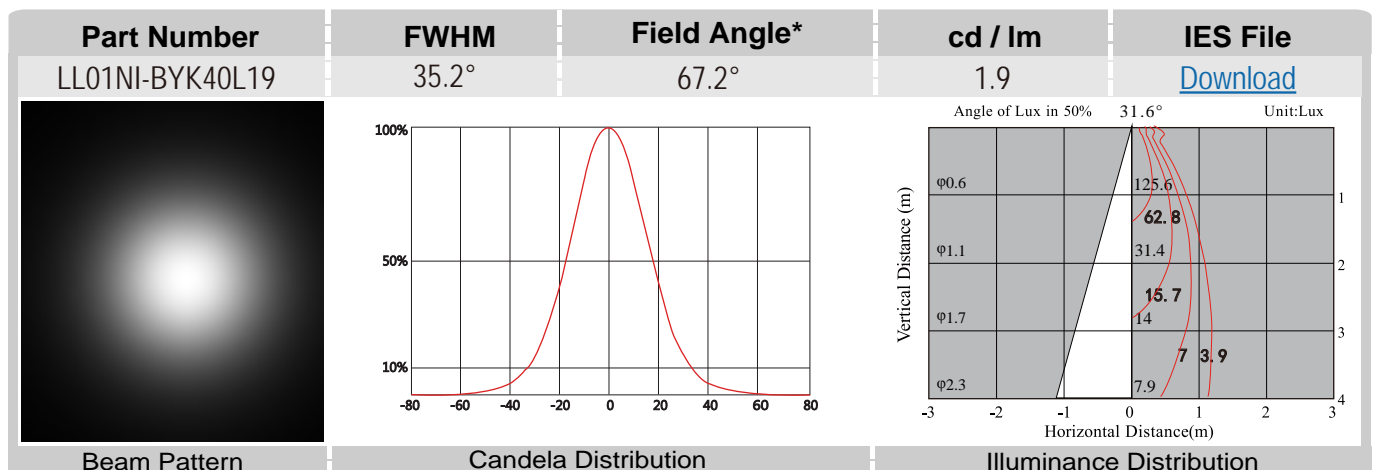
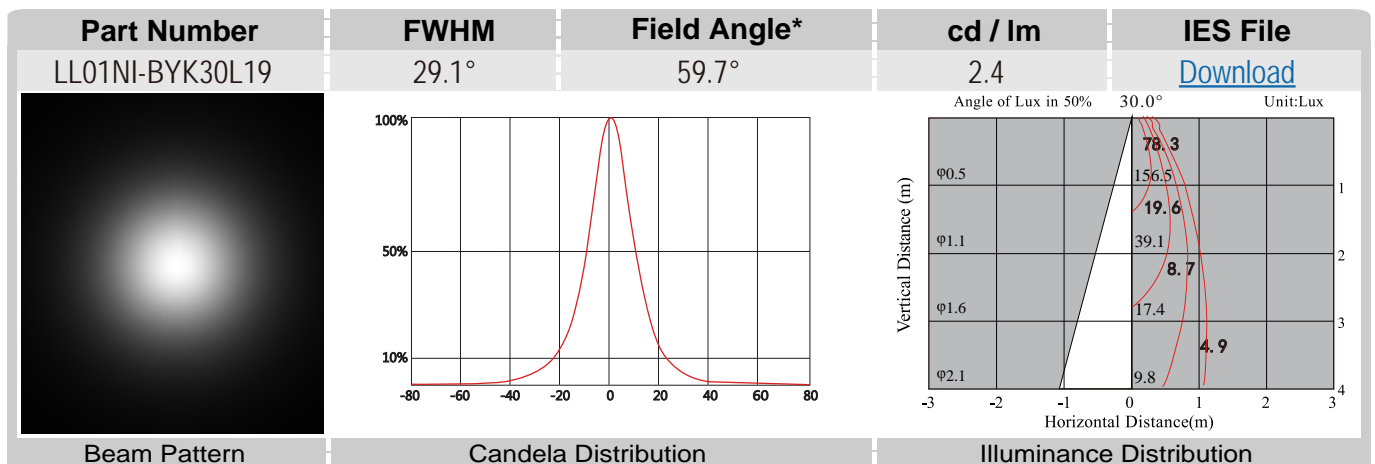
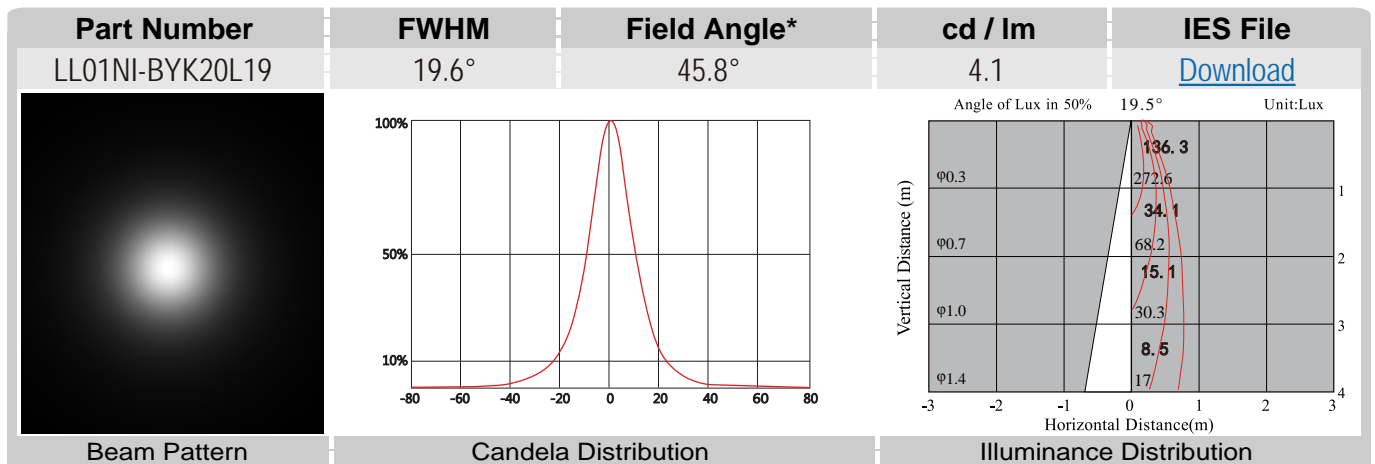
## Optical Specifications

**PHILIPS**  
**LUMILEDS**



**3030 2D**

Note: (1) All the results of analysis are based on 0 degrees of elevation.  
 (2) Tolerance:  $\pm 10\%$ .  
 (3) Led Luminous Flux(lm): 65( $\pm 5\%$ ).



# LL01NI-BYKxxL19

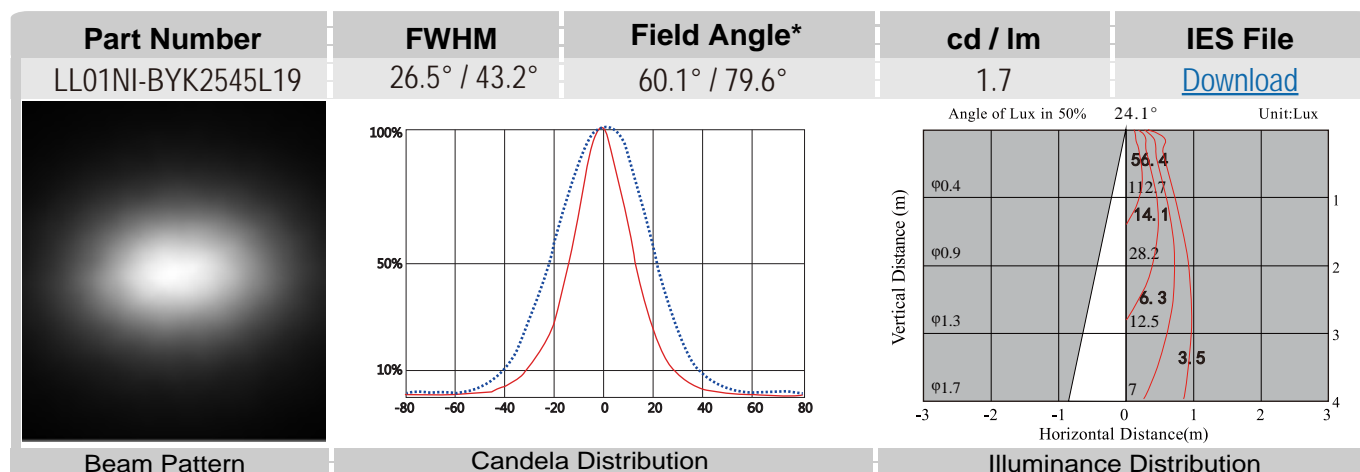
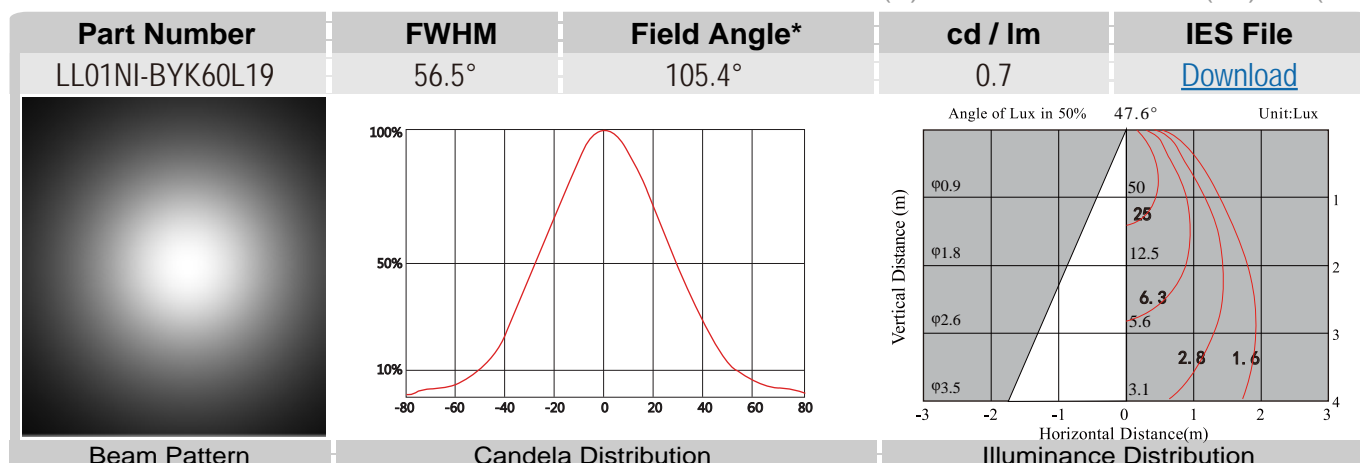
## Optical Specifications

**PHILIPS**  
**LUMILEDS**



**3030 2D**

Note: (1) All the results of analysis are based on 0 degrees of elevation.  
 (2) Tolerance:  $\pm 10\%$ .  
 (3) Led Luminous Flux(lm): 65( $\pm 5\%$ ).



\*The Field Angle is the angle between the two directions opposed to each other over the beam axis for which the luminous intensity is 10% that of the maximum luminous intensity.  
 \*This testing result is obtained through testing the popular rank LED samples which provided by the original manufacturer. Hence, the testing results would be varied as the users choose same LED model but different rank.



# LL01NI-BYKxxL19

## Mechanical Specification

### 1. Fixing method

☐ Glue

☐ Screw

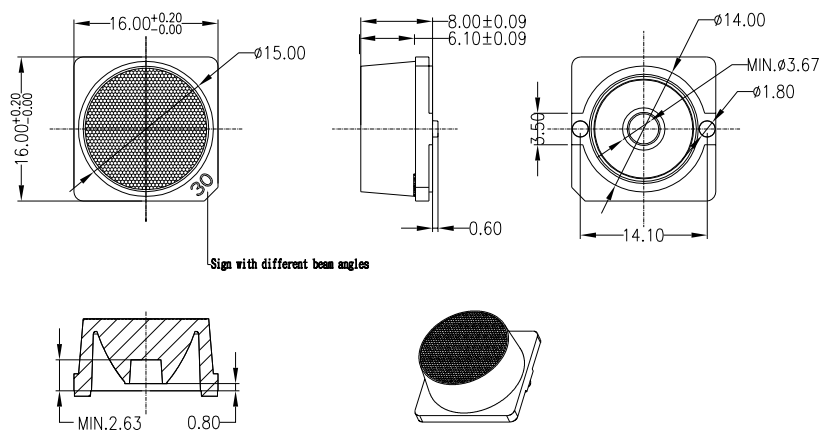
☐ Tape

☐ Fixing-ring

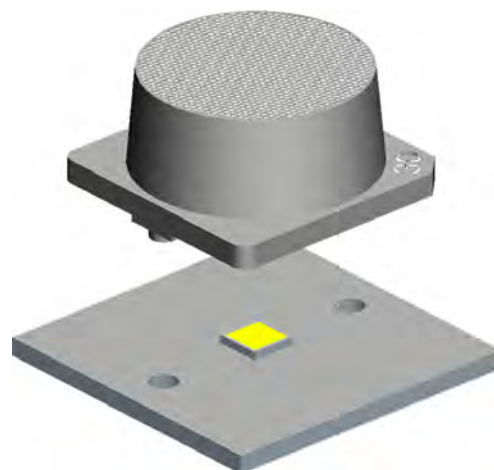
☒ Frame

Note: (1) All dimensions are in mm.  
 (2) All tolerance are  $\pm 0.15$  mm unless otherwise specified.

### 2. Lens dimension

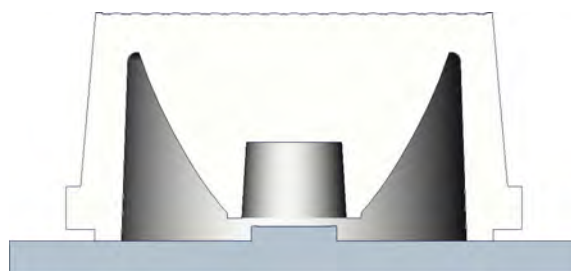


### 3. Lens + Leds assembly instruction



### 4. Holder dimension

### 5. View assembly lens with LED:



# LL01NI-BYKxxL19

## Package Specifications

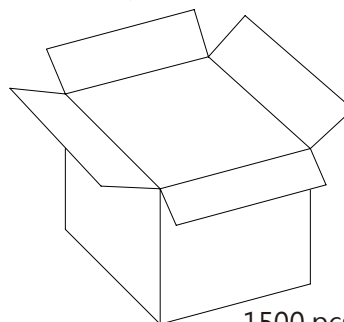
Item	Quantity	Total	Size(L*W*H)	G.W
Inside the bag	1 pcs/plastic bag	1 pcs	10*6.5 cm	1.2g
	10 pcs/one group	10 pcs		
Outer box	1500 pcs /Outer box	1500 pcs	35*31*21cm	



1pcs/Plastic bag



10 products bound into a group



1500 pcs /Outer box

In a large plastic bag and placed in carton.



**Note:**